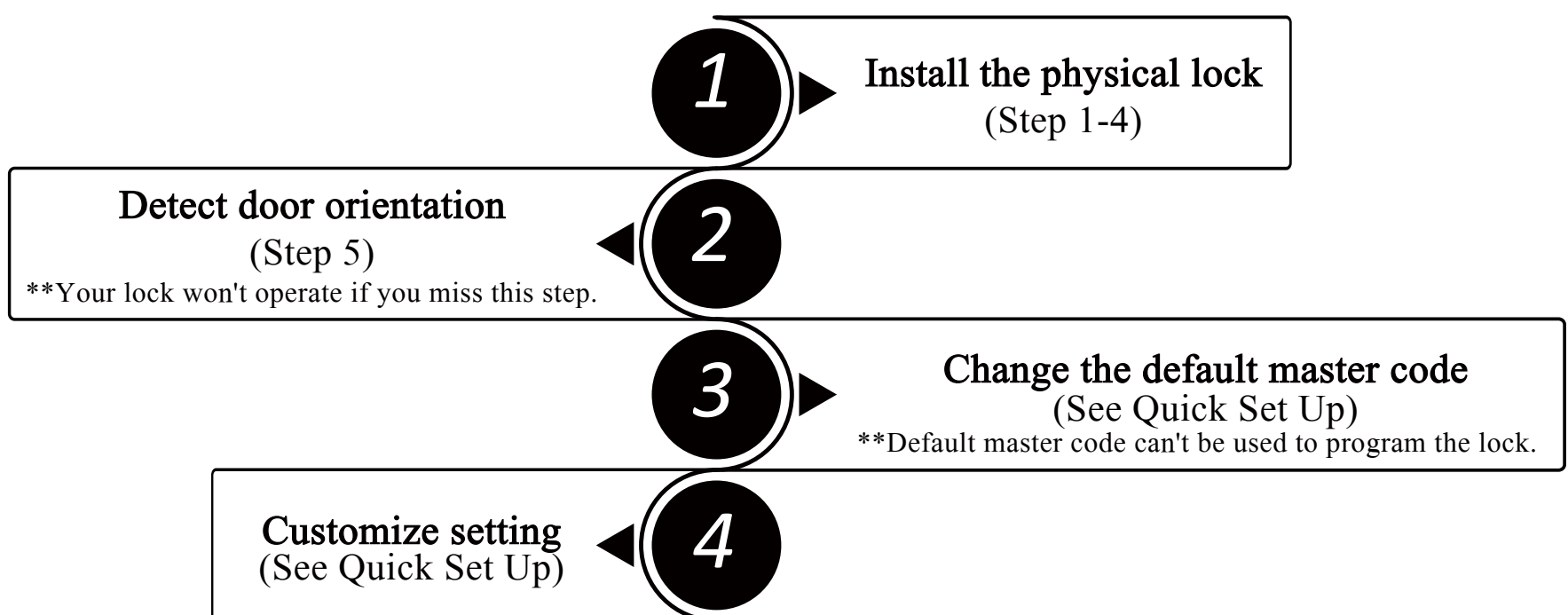




OrangeIoT RZ-A Installation & Programming Guide

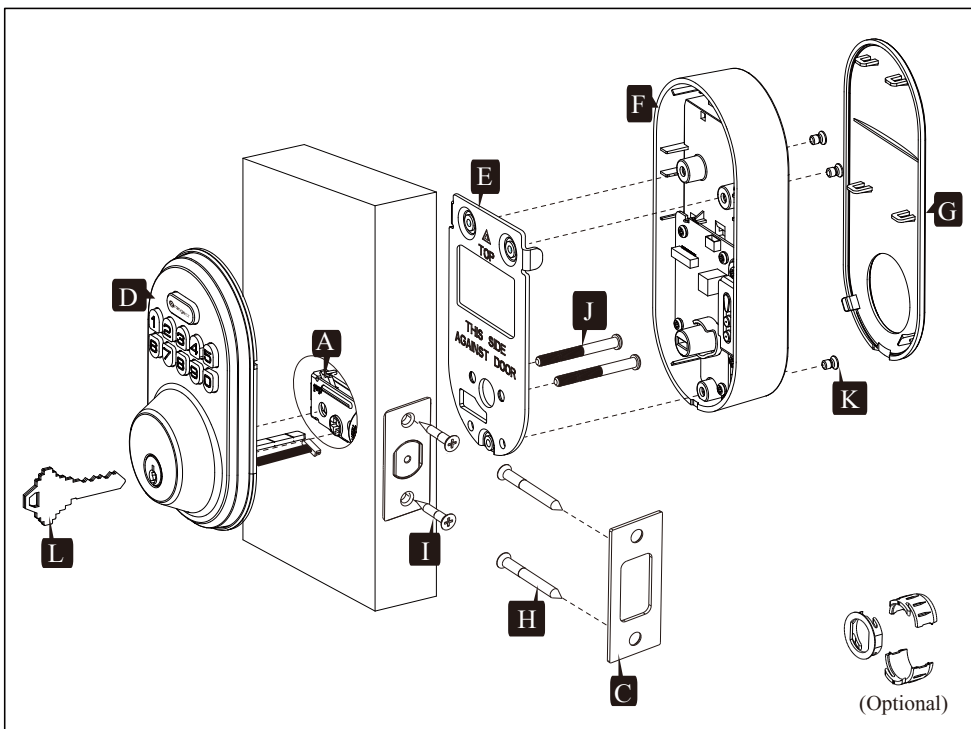
Installation Overview



Please read this user manual before fitting and using your keypad lock!
If you need help, please contact us at support@i-OrangeIoT.com

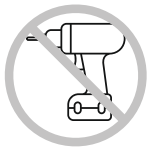
Parts List

If any parts are missing or damaged, please contact us.



Latch A 	Drive-In Collar (Optional) B 	Strike C 	Exterior Assembly D
Mounting Plate E 	Interior Assembly F 	Battery Cover G 	Strike Screws H × 2
Latch Screws I × 2 	Mounting Plate Screws J × 2 	Interior Assembly Screws K × 3 	Backup Key L × 1

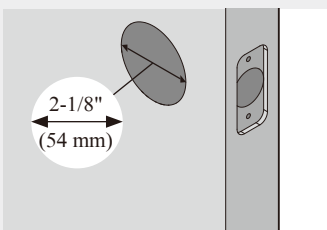
TOOL REQUIRED:



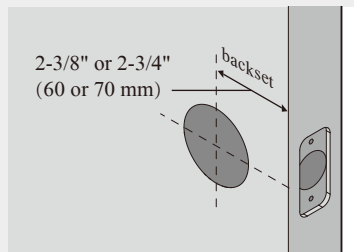
USE OF A POWERED SEWDRIVER IS NOT RECOMMENDED

1 Prepare the door and check dimensions

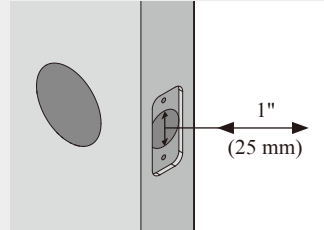
A Measure to confirm that the hole in the door is 2-1/8" (54 mm)



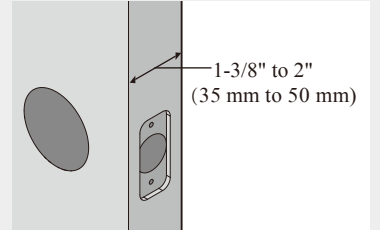
B Measure to confirm that the backset is either 2-3/8" or 2-3/4" (60 or 70 mm)



C Measure to confirm that the hole in the door edge is 1" (25 mm)

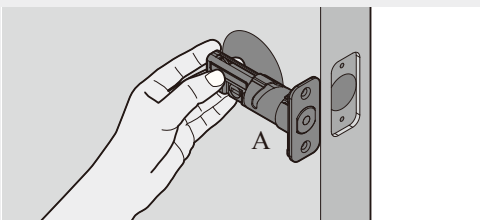


D Measure to confirm that the door is 1-3/8" to 2" (35 mm or 50 mm) thick



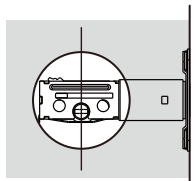
2 Install the latch and strike

A Hold the latch in front of the door hole, with the latch face flush against the door edge



Is the slotted hole centered in the door hole?

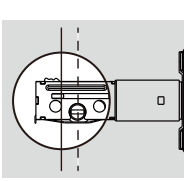
YES



Slotted hole is centered.

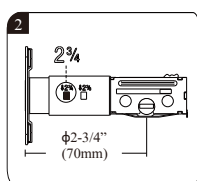
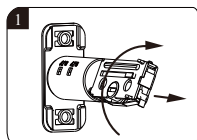
No adjustment is required. Proceed to next step.

NO



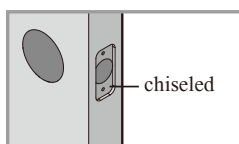
Slotted hole is NOT centered.

Rotate and pull the latch as shown to extend latch.



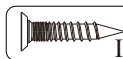
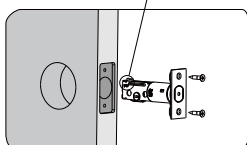
B Is the door edge chiseled?

YES

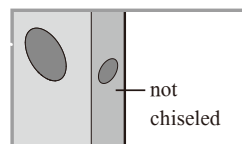


Install latch in door with screws I. Do not overtighten screws.

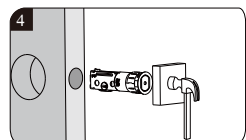
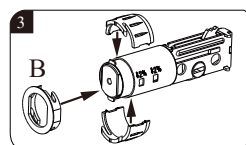
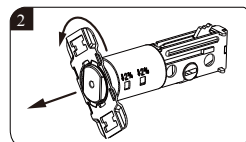
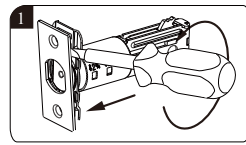
Make sure the UP icon goes up.



NO



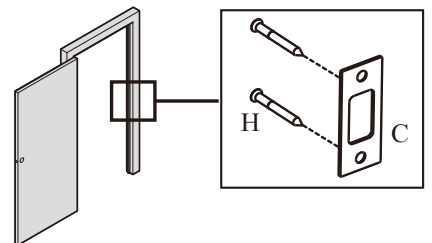
Use a flathead screwdriver to remove Rectangular face from latch and install drive-in collar.



Install latch in door with wood block and hammer.

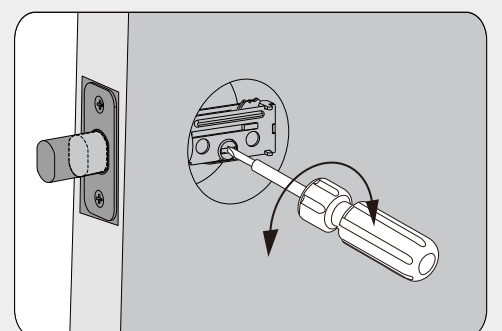
C Install strike with screws H on the door frame

Make sure hole in door frame is drilled a minimum of 1" (25 mm) deep.



D With the door closed, use a flat-head screwdriver to test if deadbolt works smoothly.

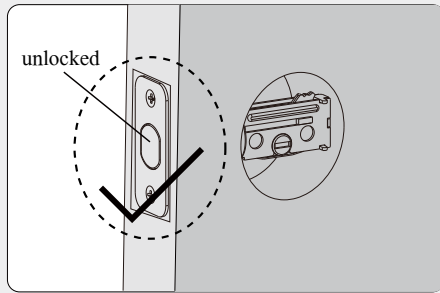
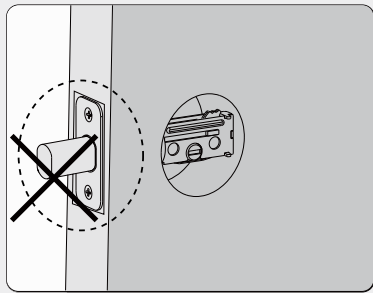
Check alignment between the latch and the strike, making sure when the deadbolt is extended, it is going into the bolt hole and not hitting the deadbolt strike or door frame.



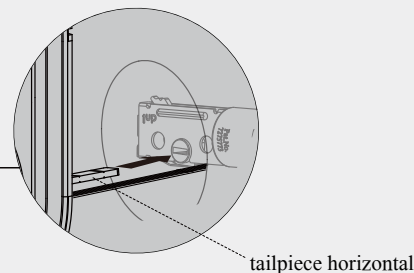
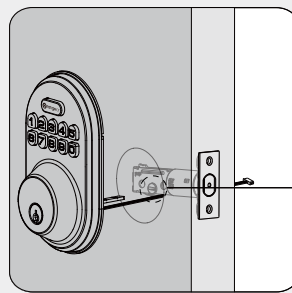
3 Install exterior assembly

! Do not insert the physical key before and during installation.

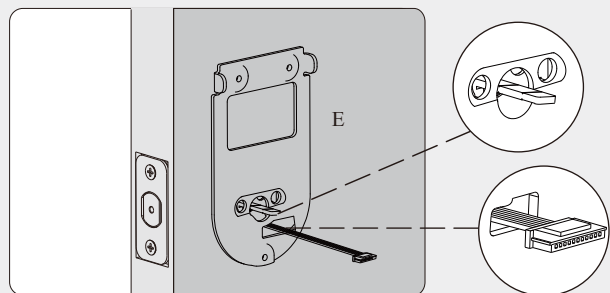
A Before installation, make sure the latch is fully retracted (in the unlocked position).



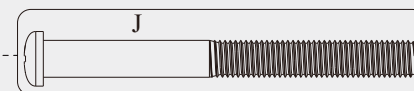
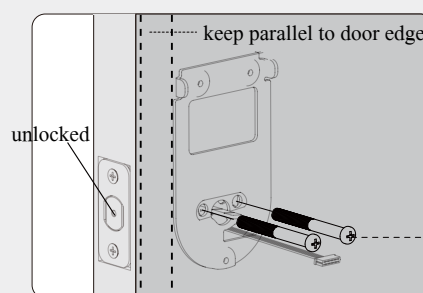
B Route the cable below the latch and insert the cylinder tailpiece through the horizontal slot in the latch.



C Send the cable through the bottom horizontal slot in the mounting plate.



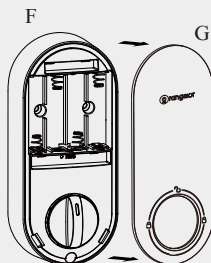
D Secure the mounting plate with the screws J. Do not overtighten screws.



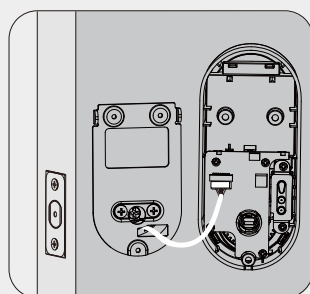
4 Install interior assembly

! Do not load batteries until lock is completely installed.

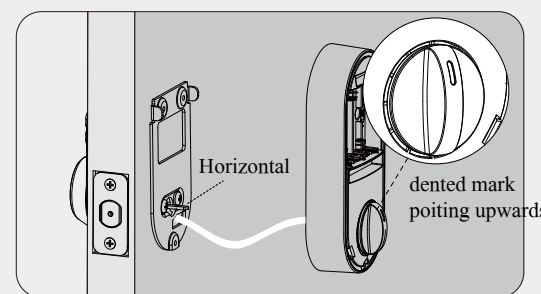
A Remove the battery cover. Locate the slot at the bottom and use your fingernail or a flat head screwdriver to pry the cover up and pull it off.



B Insert the cable connector to the socket. Push the connector in firmly until it is completely seated.

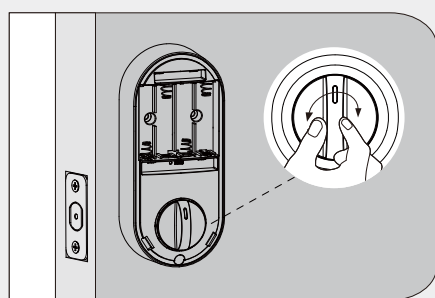


C Rotate the thumbturn and keep it pointing upwards. Make sure the latch is still fully retracted (unlocked).

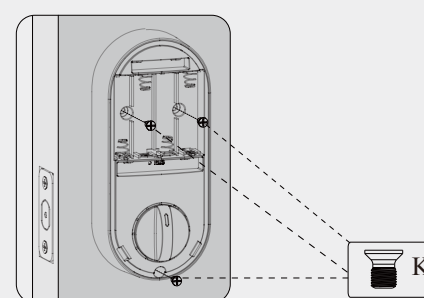


D Test operation using backup key and thumbturn for smooth rotation.

If thumbturn doesn't rotate, repeat step 4C, making sure the thumbturn is facing upwards, and tailpiece in horizontal position. Do not put the physical key in the lock before the lock is completely installed.



E Secure the interior assembly with screws K.



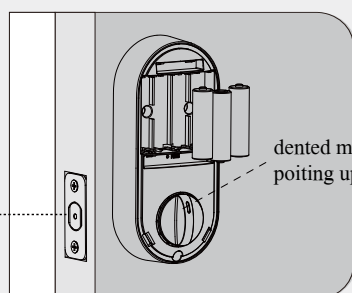
5 Door Handing (Perform a factory reset to detect left/right door orientation.)

! Always run this step after installation. The motor will not operate before completing the step.

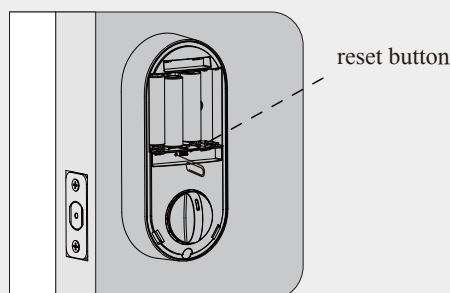
A While the door is OPENED and UNLOCKED (latch retracted and thumbturn pointing upwards), load 3 AA batteries into the battery compartment.

NOTE:

- a. For best results, use new, non-rechargeable Alkaline batteries only. Do not mix old and new batteries.
- b. Leave the door open while resetting to prevent accidental lockout.



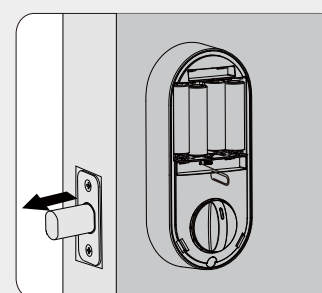
B Press and hold the Reset button. Do not release the reset button until you completed the next step.



C Place the 4th battery and keep holding the reset button, until the latch bolt extend.

NOTE:

- If the latch doesn't extend within 10 seconds, repeat step 4C and 5A, making sure the thumbturn is always vertical and latch always retracted.



How To Use

UNLOCK the door from outside

Master code → 

or

User code → 

LOCK the door from outside

One-touch Locking

Press any key on keypad for 2 seconds.

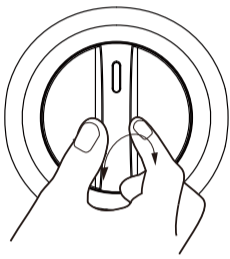


Enable Auto Lock

After Auto Lock is enabled, the bolt will automatically extend in 30 seconds after unlocking to lock the door.

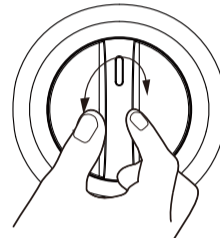
(see Quick Set Up for how to enable this function)

UNLOCK the door from inside



Rotate the thumb turn to Unlock position.

LOCK the door from inside



Rotate the thumb turn to Lock position.

Programming Instructions

△IMPORTANT: READ this before proceeding to programming.

► Definitions

A. Master Code

- The master code is the administrative code for program lock functions. It will also unlock the door.
- The default master code is 12345678.
For security reason, the default master code dose not program the lock. You must change it to a code of your own prior to programming.

B. User Code

- Up to 20 user code and one temporary code can be sotred.

B. Code Format

- Code is 4-10 digits.
- Both master code and user code do not support the following sequence.
 - a. Forward number sequence
1 2 3 4 5 6 7 8 9 ✗
 - b. Backward number sequence
9 8 7 6 5 4 3 2 1 ✗
 - c. Repeat number sequence
2 2 2 2 2 2 2 2 ✗
 - d. Contain existing code sequence
If 5 6 8 3 ✓
Then 5 6 8 3 9 1 ✗
and 9 1 5 6 8 3 ✗

C. Wrong Entry Limit

After 10 unsuccessful attempts at entering a valid PIN code, the unit will shut down for 3 minuets.

D. Unlock with Fake code

User can prevent pin code exposure from strangers by entering random digits before or after pin code.



E. Battery Indicator

If you hear 10 beeps corresponding with 10 red flashes after pressing any key or lock and unlock the door, that's an indication that the batteries need to be replaced soon. Please replace with 4 new AA alkaline batteries and do not mix old and new batteries. All settings are r etained in the memory when the batteries are removed and replaced.

F. Key Override

Key Override can be used to gain access when the batteries are completely dead or when no valid User Code is known. Please keep at least one copy of the backup key in secure location outside of your place.

► Quick Set Up

△ IMPORTANT:

- Each programming step needs to be completed within 5 seconds.
- If you hear 5 rapid beeps with flashing red lights, it indicates entry error or time-out. Please start over.

★ A. Change Master Code

△ The default Master Code is 12345678. This code must be changed prior to programming the lock.

Ⓜ → Ⓜ → Master Code → Ⓜ → 1 → New Master Code → Ⓜ → Enter the New Code Again → Ⓜ

B. Add User Code

- Up to 20 User Codes can be stored.

Ⓜ → Ⓜ → Master Code → Ⓜ → 2 → New User Code → Ⓜ → Enter the New User Code Again → Ⓜ

C. Delete User Code

Ⓜ → Ⓜ → Master Code → Ⓜ → 3 → Unwanted User Code → Ⓜ

D. Enable Silent Mode

- The beep sounds when pressing keypad can be muted. But you will still hear low battery and system alerts.

Ⓜ → Ⓜ → Master Code → Ⓜ → 4 → 2 → Ⓜ

E. Disable Silent Mode

Ⓜ → Ⓜ → Master Code → Ⓜ → 4 → 1 → Ⓜ

F. Enable Auto Lock

- Automatically locks the deadbolt 30 seconds after unlocking. This feature is off by default.

Ⓜ → Ⓜ → Master Code → Ⓜ → 5 → 1 → Ⓜ

G. Disable Auto Lock

Ⓜ → Ⓜ → Master Code → Ⓜ → 5 → 2 → Ⓜ

H. Set Auto Lock Time Delay

- You can set the Auto Lock time delay between 10 and 99 seconds.

Ⓜ → Ⓜ → Master Code → Ⓜ → 8 → Enter Duration Time (10 - 99) → Ⓜ

I. Add One-Time Code

- This code can only be used once and is automatically deleted when used.

Ⓜ → Ⓜ → Master Code → Ⓜ → 7 → Enter the New User Code → Ⓜ → Enter the New User Code Again → Ⓜ

J. Vacation Mode

- This is a security feature for you when you are leaving your home for vacation or long trip. Enabling vacation mode will restrict all user codes until master code is entered on keypad. If the lock is unlocked by thumb turn, the lock will sound an alarm.

Ⓜ → Ⓜ → Master Code → Ⓜ → 6 → Ⓜ

► Factory Default Settings

Settings	Factory Defaut
Master Code	12345678
Auto Lock	Disabled
Silent Mode	Disabled
Wrong Code Entry Limit	10 times
Vacation Mode	Disabled

► How To Reset

△ IMPORTANT:

Factory reset process is the same as door handing.

By performing the steps below, you will teach the lock the orientation of your door and delete all User Codes and custom settings associated with the lock.

Step1 Keep the door opened and make sure the latch is retracted and thumbturn vertical.

Step2 Press and hold the reset button with one hand and the other hand take out one battery and place it back.

Step3 Do not release the reset button after battery is connected, instead, keep holding it until the latch automatically extend.

► Safety Warnings

- Protect your User Codes and Master Code.
- Restrict access to your lock's interior assembly and routinely check your settings to ensure they have not been altered without your knowledge.
- Proper cleaning and maintenance of your lock ensures it will continue to work as it should.
- Do not apply cleaner or detergent directly to any part of the lock.
- The RZ-A meets IP54 water-resistance. It can withstand water splashes ; however, it is not waterproof. Do not let water and liquids get into the lock.
- Avoid exposure to direct sunlight. Long-term exposure to direct sunlight may damage the lock.
- The temperature range of the RZ-A is between -4°F to 131 F.

► Troubleshooting

1 Problem: When resetting the lock, the latch does not extend but I can hear the motor turning.

Cause(A): The latch and strike are misaligned, causing the latch to bind.

Solution(A): a. Adjust the position of the strike plate.
b. Make sure you reset the lock with the door opened.

Cause(B): Internal electronic components have a residual charge which the lock tries to use, and it is not adequate to allow the lock to function when connecting the batteries.

Solution(B): Take out all batteries and unplug power cable. Press and release any key on the keypad for minutes and let the lock sit for another few minutes. If there is residual charge within the lock, this will consume the charge.

Cause(C): The mounting screws securing the exterior keypad and the latch bolt are over-tightened.

Solution(C): Slightly loosen the screws.

2 Problem: When resetting the lock, the latch does not extend and I can't hear the motor turning.

Cause: The lock is not reset properly.

Solution: Repeat step 4C and 5A, make sure that the thumbturn is vertical and the deadbolt latch is retracted (unlocked) when installing and resetting.

3 Problem: The lock does not lock and unlock electronically.

Cause: The door handing process was not executed.

Solutions: Perform a factory reset to teach the lock the orientation of your door (Step 5).

4 Problem: After installation, the thumbturn cannot rotate.

Cause(A): The lock is not installed properly.

Solution(A): Remove and re-install the whole lock, making sure that the thumbturn is vertical and the lock is in unlock position when installing. Do not insert the backup key when installing.

Cause(B): Internal electronic components have a residual charge which the lock tries to use, and it is not adequate to allow the lock to function when battery connected.

Solution(B): Take out all batteries and unplug power cable. Press and release any key on the keypad for minutes and let the lock sit for another few minutes. If there is residual charge within the lock, this will consume the charge.

5 Problem: The lock only functions electronically when the backup key is in; I cannot pull the key out in the unlocked position.

Cause: The lock is not installed properly.

Solution: a. Remove and re-install the whole lock, making sure that the thumbturn is pointing upwards and the lock is in unlocked position when installing.
b. Do not insert the physical key before lock is completely installed.

6 Problem: The keypad doesn't respond when touched (no lights are visible and no beeping is heard) .

Cause: The lock has no power.

Solution: a. Make sure the cable is properly connected.
b. Change the batteries with 4 fresh AA standard alkaline batteries. Do not mix old and new batteries.

7 Problem: The batteries run low quickly.

Cause: The deadbolt and the strike plate could be misaligned, especially when there's change in temperature and humidity, doors can become 'warped'. As a result, there could be strong 'friction' as the deadbolt tries to extend. More friction means that the motor needs to work harder to lock your door, so your batteries life may be impacted.

Solution: Make sure your door locks and unlocks smoothly. Re-install your lock and make sure the latch and strike are properly aligned.

8 Problem: When attempting to lock the deadbolt electronically, the latch goes in and out for a few times.

Cause: The latch and strike are misaligned.

Solution: a. Make sure the bolt hole on the door frame is at least 1 inch deep so the bolt fully extends.
b. Check if the door closes properly. Make sure when the deadbolt is extended, it is going into the bolt hole and not hitting the deadbolt strike or door frame.
c. Check for loose door hinges.

9 Problem: When attempting to unlock the deadbolt electronically, the latch goes in and out for a few times.

Cause: As in the problem with locking the bolt, the bolt may be binding against the strike plate. There may be interference, especially if the door has warped due to a change in the weather.

Solution: a. Check if the door closes properly. Make sure when the deadbolt is extended, it is going into the bolt hole and not hitting the deadbolt strike or door frame.
b. Check for loose door hinges

10 Problem: I received 5 rapid beeps when programming.

Cause: a. Time-out
b. Wrong entry

Solution: a. Complete each step within 5 seconds.
b. Change the default master code before programming.
c. Enter a new code in correct format and within 4 to 10 digits.

11 Problem: I forgot my Master Codes.

Solution: Perform a factory reset. Once the reset is completed, all codes and settings will be erased and the Master code will return to the default value (12345678) .

12 Problem: I lost all the preset codes after door handing.

Cause: Door handing is the same as factory reset. Your lock has restored to factory default.

Solution: Re-program your codes.

* If none of the above resolves your issue, please contact us at support@i-OrangeIOT.com.

* Installation video: <https://i-orangeiot.com/pages/installation-guide>